

EDEN illumination



LED Lighting Catalogue 2011

Welcome to EDEN illumination

These days we all have a responsibility for our environment. We must learn to live in a sustainable way and to use our energy resources in the most efficient way possible.

At EDEN illumination Ltd, we are committed to offering products which will provide an energy efficient LED alternative to conventional lighting technologies.

We can now offer advice on the amount of energy saving which may be achieved on particular lighting projects over a given period of time, using LED products.

In the next few years, high brightness LED lighting will quickly replace conventional lighting for a wealth of commercial, industrial, institutional and consumer applications.

LED products and environments will bring irresistible value and unlimited design potential to lighting solutions of all kinds of LED lighting, This will reduce waste and power consumption worldwide.

At EDEN illumination, our distinct expertise lies in guiding and consulting entities that wish to vitilize this new lighting technology. EDEN illumination, offers the knowledge and ability required to get to the marketplace as quickly and as cost-effectively as possible.

At EDEN illumination, our designers and engineers can conceive and realise your complete LED environments, products and custom lighting solutions. In addition, EDEN illumination will work with architects, lighting designers, contractors and product designers to help them apply LED technology to their projects and installations, realising their own LED lighting solution and visions.

The company is at the forefront of global LED research and product development and designs and manufactures ready-to-use LED lamps and luminaries, as well as providing customised lighting solutions for architectural and artistic projects.

LED (or light-emitting diode) based products provide an energy conserving, sustainable and environmentally friendly alternative to other lighting solutions since they are recyclable and do not contain harmful chemicals.



Why LED lighting?

Did you know that the EU has decided that some lamps cannot be sold after the set time schedule?

The schedule looks like this:

- 2009 ban on all carpet + clear bulbs 100 watts incandescent
- 2010 ban on clear 75 watt bulbs
- 2011 ban on 60-watt bulbs
- 2012 ban on 40 and 25 watt bulbs
- 2013 Stricter requirements for energy-saving lamps and LED lamps
- 2016 Stricter requirements for halogen lamps

LEDs are a superior choice for a variety of reasons.

Energy Efficient

The key strength of LED lighting systems is in their low power consumption and durability. On average LED based lighting systems will use 60%-70% of the power consumption of their incandescent counterparts. While lower power consumption reduces operating costs, it also reduces wear on other components in the application such as transformers, batteries and power converters.

Durable and hard wearing

LEDs are built inside solid cases that protect them, making them extremely durable.

Long Life and low maintenance

LEDs have an extremely long life span. Furthermore, LEDs fail by dimming over time, rather than the abrupt burn-out of incandescent bulbs. LEDs light up very quickly. An illumination LED, will achieve full brightness in approximately 0.01 seconds, 10 times faster than an incandescent light bulb (0.1 second), and many times faster than a compact fluorescent lamp, which start to come on after 0.5 second or 1 second, but does not achieve full brightness for 30 seconds or more.

Low heat emission

LEDs give off much less heat than incandescent bulbs with similar light output.

Vivid colours without filters and Colour changing

LEDs can emit light of an intended colour without the use of colour filters that traditional lighting methods require.

Directed light

The light emitted from an LED is directional, which results in fitting efficiency of 80-90%.

Flicker free

Unlike CFLs, LED does not flicker.

No Mercury, No UV and IR

Unlike CFLs, LED fittings do not contain mercury and no ultra-violet and infra-red rays in the light beam.



LED LAMP What You Need to Know?

1) Lamp Lifetime

The lifetime of an LED lamp is generally considered to be when its light output has decreased by 70%. Output is measured in lumens, so say a 300 lumen LED lamp with a lifespan of 50,000 hours, will be said to have reached the end of its lifespan when its output decreases to 210 lumen. However, it is important to remember that this does not mean that the LED lamp is unusable, only that its light output has degraded to a certain point. The LED lamp may continue to be useful for several thousand hours past its stated lifetime, as unlike old-fashioned light bulbs it is extremely rare for an LED lamp to burn out. LED lamps simply very gradually fade over time.

2) Color Temperature

As a general rule, you should use warmer light indoors, and whiter light outdoors. A colour temperature of 2500-4000 Kelvin works well indoors, whereas a colour temperature of 5000-7000 Kelvin is best suited to outdoor environments as whiter lights allow better vision at night. These higher Kelvin white lights are also perfect to illuminate display cases, boutiques or artwork.

3) Beam Angles

With a more focused light than traditional incandescent floodlights, LED lamps tend to fall between a 30 to 70 degree range and are more focused like spotlights. As manufacturers measurements do vary, one 50W flood can differ from another 50W flood. The best way to make an assessment is to see a picture of the light in action and also to make a side-by-side comparison with other models.

Start Using LEDs Now!

In the not too distant future, all light bulbs will be LED. The traditional light bulb, compact fluorescent lamps (CFLs) and incandescent will soon be a thing of the past. CFLs are a major hazard to dispose of, especially when they break, as they contain enough mercury and phosphor to contaminate 30,000 litres of drinking water. Halogen lamps also waste an incredible 90% of the energy they consume, turning it into heat and not light. The initial LED investment may be greater, however in the long run the change to LED will be much more cost effective for your business, your client's businesses and your home. The quicker the LED uptake in general, the quicker prices will reduce. Adopting LED is kinder to the environment, making the world a cleaner and greener place to live, one LED at a time.

Lamp Comparison

- Halogen lamps waste 90% of the energy that they consume, by turning it into heat not light
- Our table below briefly sets out the differences between halogens, CFLs and LEDs.

Lamp Equivalent Chart			
Lamp Equivalents	Halogens	CFLs	LEDs
Life Expectancy	2,000 to 5,000Hrs	8,000 to 15,000Hrs	50,000 to 65,000Hrs
Kilowatt/hrs pa x 1 lamp (hperyear=8760)	306.6kWh	96.4kWh	32.4kWh
Health Effects	UVrays, IR effects, SAD Syndrome	UVrays, IR effects	No UV, No IR
Special Disposal (WEEE)	Non domesticonly (to landfill)	Yes (Compliance with WEEE Directive-Specialist Disposal)	Non domestic only (Recyclable)
Colour Rendition	Restricted Colour Options or Filters Required	Restricted Colour Options or Filters Required	Wide Range of Colours
Dimmability	Yes	Restricted Possibility	Yes
Robustness	Sensitive, Breakable	Sensitive, Breakable	Robust, Solid State
Start-up Time	Almost Immediate	Delayed	Immediate
Cost of Ownership	High	Low	Lowest
Recyclability	Landfill	Specialist Disposal	Recyclable
Contaminants	Reasonably Safe	Mercury	None=Safe
Light Efficiency	10-30 lumens/watt	60-70 lumens/watt	40-135 lumens/watt
Energy Efficiency	10%	40%	90%

Product Range



Down Lights
Pages 1-2
Commercial and domestic
single colour and RGB
LED down lights



Linear LED
Page 8
Single colour and RGB
commercial and domestic
linear LEDs



RetroFit Led Lamps
Page 3-4
Single colour and RGB
commercial and domestic
LED RetroFit Lamps



Wallwash
Page 8
Single colour and RGB
LED wallwash lighting



Landscape
Pages 5-6
Single colour and RGB
LED landscape lighting



Flexible
Page 9
Flexible plug and play LED
lighting and serpent flex strips



Flood-Lights
Pages 5-6
Commercial and domestic
single colour and RGB
LED floodlights



New Products
Pages 10-11-12
At EDEN illumination we are
always developing new products
please visit our website for up to
date products.



Up-lights
Page 7
Single colour and RGB
LED up-lights



Emergency-Safety
Pages 13-14-15
Emergency lighting and
CBS systems



Pool-Lights
Page 7
Pool and fountain single colour
and RGB LED lighting



Accessories
Page 16
Driver power supplies and
accessories manufactured
to customer requirements

Downlights



Deneva 1 6 x 3 Watt Downlight

Lumen Output	1170
Efficacy	65lm/W C/W
Colour Temperature	C/W 600K-7000K
Rated Life	50,000 Hours
CRI	85
Mounting	Recessed Cut Out 170mm
Dimensions	195 Dia x 124mm

Order code ED20-DEN-1-X-Y-Z

Input Power	220-240 Volts
Beam Spread	15 - 30 - 45 Degs
Housing	Die Cast Aluminium
LEDs	6 x 3W CREE XRE
LED Colours	C/W W/W Red Green Blue Amber
Environment	IP44
Approvals	CE and Rohs Compliant

X = Beam Angle 15(N) 30(M) 45(W) Y = LED Colour Z = Non Dimmable (ND) or Dimmable (D)



Deneva 2 6 x 3 Watt Downlight

Lumen Output	1170
Efficacy	65lm/W C/W
Colour Temperature	C/W 600K-7000K
Rated Life	50,000 Hours
CRI	85
Mounting	Recessed Cut Out 170mm
Dimensions	195 Dia x 124mm

Order code ED20-DEN-2-X-Y-Z

Input Power	220-240 Volts
Beam Spread	15 - 30 - 45 Degs
Housing	Die Cast Aluminium
LEDs	6 x 3W CREE XRE
LED Colours	C/W W/W Red Green Blue Amber
Environment	IP44
Approvals	CE and Rohs Compliant

X = Beam Angle 15(N) 30(M) 45(W) Y = LED Colour Z = Non Dimmable (ND) or Dimmable (D)



Deneva 3 8 x 3 Watt Downlight

Lumen Output	1740
Efficacy	70lm/W C/W
Colour Temperature	C/W 600K-7000K
Rated Life	50,000 Hours
CRI	85
Mounting	Recessed Cut Out 170mm
Dimensions	195 Dia x 124mm

Order code ED20-DEN-3-X-Y-Z

Input Power	220-240 Volts
Beam Spread	15 - 30 - 45 Degs
Housing	Die Cast Aluminium
LEDs	8 x 3W CREE XRE
LED Colours	C/W W/W Red Green Blue Amber
Environment	IP44
Approvals	CE and Rohs Compliant

X = Beam Angle 15(N) 30(M) 45(W) Y = LED Colour Z = Non Dimmable (ND) or Dimmable (D)



Deneva 4 8 x 3 Watt Downlight

Lumen Output	1740
Efficacy	70lm/W C/W
Colour Temperature	C/W 600K-7000K
Rated Life	50,000 Hours
CRI	85
Mounting	Recessed Cut Out 170mm
Dimensions	195 Dia x 124mm

Order code ED20-DEN-4-X-Y-Z

Input Power	220-240 Volts
Beam Spread	15 - 30 - 45 Degs
Housing	Die Cast Aluminium
LEDs	8 x 3W CREE XRE
LED Colours	C/W W/W Red Green Blue Amber
Environment	IP44
Approvals	CE and Rohs Compliant

X = Beam Angle 15(N) 30(M) 45(W) Y = LED Colour Z = Non Dimmable (ND) or Dimmable (D)



Venus 1S 5 Watt Downlight

Lumen Output	750
Efficacy	75lm/W C/W
Colour Temperature	C/W 600K-7000K
Rated Life	50,000 Hours
CRI	85
Mounting	Recessed Cut Out 105mm
Dimensions	118 Dia x 100mm

Order code ED25-VEN-1S-X-Y-Z

Input Power	220-240 Volts
Beam Spread	60 Degs
Housing	Die Cast Aluminium
LEDs	1 x 5W Multichip
LED Colours	C/W W/W Red Green Blue Amber
Environment	IP44
Approvals	CE and Rohs Compliant

X = Wattage 5w Y = LED Colour Z = Finish - White (W) Brushed (BA) Polished (PA)



Venus 2S 10 Watt Downlight

Lumen Output	750
Efficacy	75lm/W C/W
Colour Temperature	C/W 600K-7000K
Rated Life	50,000 Hours
CRI	85
Mounting	Recessed Cut Out 128mm
Dimensions	135 Dia x 150mm

Order code ED25-VEN-2S-X-Y-Z

Input Power	220-240 Volts
Beam Spread	60 Degs
Housing	Die Cast Aluminium
LEDs	1 x 10W Multichip
LED Colours	C/W W/W Red Green Blue Amber
Environment	IP44
Approvals	CE and Rohs Compliant

X = Wattage 10w Y = LED Colour Z = Finish - White (W) Brushed (BA) Polished (PA)



Venus 3S 15 or 20 Watt Downlight

Lumen Output	750 -1500
Efficacy	75lm/W C/W
Colour Temperature	C/W 600K-7000K
Rated Life	50,000 Hours
CRI	85
Mounting	Recessed Cut Out 95-101mm
Dimensions	100-125mm Dia x 130mm

Order code ED25-VEN-3S-X-Y-Z

Input Power	220-240 Volts
Beam Spread	80 Degs
Housing	Die Cast Aluminium
LEDs	1 x 15w 20w Multichip
LED Colours	C/W W/W Red Green Blue Amber
Environment	IP44
Approvals	CE and Rohs Compliant

X=Wattage 10w 13w 15w 20w Y=LED Colour Z=Finish-White (W) Brushed (BA) Polished (PA)



Corona 15 or 24 Watt Downlight

Lumen Output	1732
Efficacy	75lm/W C/W
Colour Temperature	C/W 600K-7000K
Rated Life	50,000 Hours
CRI	85
Mounting	Recessed
Dimensions	185-228 Dia x 126mm

Order code ED25-CORONA-X-Y-Z

Input Power	220-240 Volts
Beam Spread	15w 40 Degs 25w 80 Degs
Housing	Die Cast Aluminium
LEDs	15w or 25W
LED Colours	C/W W/W
Environment	IP44
Approvals	CE and Rohs Compliant

X = Wattage 15w 25w Y = LED Colour Z = Finish - White (W) Silver (S)

Downlights



Deneva 6 4 x 3 Watt Downlight

Lumen Output 1020
Efficacy 85lm/W C/W
Colour Temperature C/W 600K-7000K
Rated Life 50,000 Hours
CRI 85
Mounting Recessed Cut Out 81mm
Dimensions 50 Dia x 124mm

Order code ED20-DEN-6-X-Y-Z

Input Power 220-240 Volts
Beam Spread 80 Degs
Housing Die Cast Aluminium
LEDs 4 x 3W CREE XRE
LED Colours W/W Red Green Blue Amber
Environment IP65
Approvals CE and Rohs Compliant

X = Beam Angle 15(N) 30(M) 45(W) Y = LED Colour Z = Non Dimmable (ND) or Dimmable (D)



Opus 1 3 x 3 Watt Downlight

Lumen Output 600
Efficacy 40lm/W C/W
Colour Temperature C/W 600K-7000K
Rated Life 50,000 Hours
CRI 85
Mounting Recessed Cut Out 81mm
Dimensions 60 Dia x 124mm

Order code ED40-OPUS-1-X-Y-Z

Input Power 220-240 Volts
Beam Spread 30 Degs
Housing Die Cast Aluminium
LEDs 3 x 3W CREE XRE
LED Colours W/W Red Green Blue Amber RGB
Environment IP65
Approvals CE and Rohs Compliant

X = Wattage 9Watt RGB 15Watt S/C Y = LED Colour Z = Body Colour (B) Black (S) Silver



Opus 2 - 14 Watt Downlight

Lumen Output 1400
Efficacy 100lm/W C/W
Colour Temperature C/W 600K-7000K
Rated Life 50,000 Hours
CRI 85
Mounting Recessed Cut Out 190mm
Dimensions 200 Dia x 115mm

Order code ED40-OPUS-2-X

Input Power 220-240 Volts
Beam Spread 80 Degs
Housing Die Cast Aluminium
LEDs CREE XRE
LED Colours W/W C/W
Environment IP65
Approvals CE and Rohs Compliant

X = LED Colour



Kraken Range 1 to 8 x 3Watt Downlight

Lumen Output 100-1920
Efficacy 90lm/W C/W
Colour Temperature C/W 600K-7000K
Rated Life 50,000 Hours
CRI 85
Mounting Recessed
Dimensions 132 Dia x 118.5mm

Order code ED20-KRAKEN-X-Y-Z

Input Power 220-240 Volts
Beam Spread 8 -15 - 30 - 45 -60 Degs
Housing Die Cast Aluminium
LEDs CREE XRE & XPC
LED Colours C/W W/W Red Green Blue Amber
Environment IP65
Approvals CE and Rohs Compliant

X = Beam Angle Y = LED Colour Z = 1x3w 3x3w 5x3w 6x3w 8x3w



Storm Range 10-50 Watt Downlight

Lumen Output 1450-4500
Efficacy 95lm/W C/W
Colour Temperature C/W 600K-7000K
Rated Life 50,000 Hours
CRI 85
Mounting Recessed Cut Out 175mm
Dimensions 195 Dia x 130mm

Order code ED50-STORM-X-Y

Input Power 220-240 Volts
Beam Spread 80 Degs
Housing Die Cast Aluminium
LEDs CREE XRE
LED Colours C/W W/W
Environment IP44
Approvals CE and Rohs Compliant

X = Wattage 10w 20w 30w 50w



JENO-1 x 10Watt Downlight

Lumen Output 850
Efficacy 85lm/W C/W
Colour Temperature C/W 600K-7000K
Rated Life 50,000 Hours
CRI 85
Mounting Recessed Cut Out 50mm
Dimensions 49.5 Dia x 50mm

Order code ED20-JENO-X-Y

Input Power 220-240 Volts
Beam Spread 30-60 Degs
Housing Die Cast Aluminium
LEDs Cree
LED Colours C/W W/W
Environment IP44
Approvals CE and Rohs Compliant

X = Beam Angle Y = LED Colour



Cruzer RGB 6 Watt GU10 & MR16 Retrofits

Lumen Output 320
Efficacy 62lm/W C/W
Colour Temperature C/W 600K-7000K
Rated Life 50,000 Hours
CRI 85
Mounting Recessed Cut out 50mm
Dimensions 49.5 Dia x 50mm

Order code ED48-CRUZER-GU10-X-Y-Z

Input Power 220-240 Volts
Beam Spread 30 - 60 Degs
Housing Die Cast Aluminium
LEDs CREE
LED Colours RGB
Environment IP40
Approvals CE and Rohs Compliant

X = Beam Angle Y = LED Colour



AR111 Retro 8 x 3 Watt Downlight

Lumen Output 1142
Efficacy 57lm/W C/W
Colour Temperature C/W 600K-7000K
Rated Life 50,000 Hours
CRI 85
Mounting Recessed Cut Out 109mm
Dimensions 111 Dia x 45mm

Order code ED55-AR111-X-Y-Z

Input Power 220-240 Volts
Beam Spread 6 - 15 - 25 - 40 Degs
Housing Die Cast Aluminium
LEDs Luxeon Rebel
LED Colours C/W W/W
Environment IP44
Approvals CE and Rohs Compliant

X = Beam Angle Y = LED Colour Z = 350-700mA

RetroFit Lamps



Creed & Cruz 3x2W GU10 MR16 Retrofits

Lumen Output 420
 Efficacy 84lm/W C/W
 Colour Temperature C/W 600K-7000K
 Rated Life 50,000 Hours
 CRI 85
 Mounting RetroFit Cut Out 50mm
 Dimensions 49.5 Dia x 50mm

Order code ED35-CRUZ-X-Y ED35-CREED-X-Y

Input Power 220-240 Volts
 Beam Spread 30-60 Degs
 Housing Die Cast Aluminium
 LEDs Cree
 LED Colours C/W W/W
 Environment IP44
 Approvals CE and Rohs Compliant

X = Beam Angle Y = LED Colour

3x1w Also Available



E40 Retrofit Lamps 28-100w

Lumen Output 2600-7000
 Efficacy 90C/W
 Colour Temperature 600K-7000K
 Rated Life 50,000 Hours
 CRI 85
 Mounting RetroFit
 Dimensions 105mm x 285mm

Order code ED71-E40-X-Y

Input Power 220-240 Volts
 Beam Spread 120 Degs
 Housing Aluminium
 LEDs High Power Cree
 LED Colours C/W N/W W/W
 Environment IP54
 Approvals CE and Rohs Compliant

X = Wattage 28-30-60-80-100 Y = LED Colour



T8 LED Tubes 600mm-1800mm

Lumen Output 1200-2600
 Efficacy 95lm/W C/W
 Colour Temperature C/W 600K-7000K
 Rated Life 50,000 Hours
 CRI 85
 Mounting RetroFit
 Dimensions 600mm TO 1800mm

Order code ED95-T8-12-X-Y-Z

Input Power 220-240 Volts
 Beam Spread 120 Degs
 Housing Aluminium
 LEDs Cree SMD High Brightness
 LED Colours C/W N/W W/W
 Environment IP44
 Approvals CE and Rohs Compliant

X= 60=600mm 12=1200mm 15=1500mm

Y = Wattage Z = LED Colour



CRUZ-2-5W DIMMABLE GU10

Lumen Output 670
 Efficacy 135lm/W C/W
 Colour Temperature C/W 600K-7000K
 Rated Life 50,000 Hours
 CRI 85
 Mounting RetroFit
 Dimensions 50mm Dia x 65mm

Order code ED42-CRUZ-2-X-Y

Input Power 220-240 Volts
 Beam Spread 30-60 Degs
 Housing Die Cast Aluminium
 LEDs 4 x 1.25w Cree
 LED Colours C/W W/W
 Environment IP65
 Approvals CE and Rohs Compliant

X=Beam Angle 30 or 60 Degs Y= LED Colour CRUZ-2-4W Also Available



CREED-2-5W DIMMABLE MR16

Lumen Output 670
 Efficacy 135lm/W C/W
 Colour Temperature C/W 600K-7000K
 Rated Life 50,000 Hours
 CRI 85
 Mounting RetroFit
 Dimensions 50mm Dia x 56mm

Order code ED42-CREED-2-X-Y-Z

Input Power 220-240 Volts
 Beam Spread 30-60 Degs
 Housing Die Cast Aluminium
 LEDs 4 x 1.25w Cree
 LED Colours C/W W/W IP65
 Environment IP44
 Approvals CE and Rohs Compliant

X=Beam Angle 30 or 60 Degs Y= LED Colour CREED-2-4W Also Available



SPIN 5W-7.5W E27-B22 Lamps

Lumen Output 560
 Efficacy 90lm/W C/W
 Colour Temperature C/W 600K-7000K
 Rated Life 50,000 Hours
 CRI 85
 Mounting RetroFit
 Dimensions 60mm Dia x 112.5mm

Order code ED50-SPIN-X-Y-Z

Input Power 220-240 Volts
 Beam Spread 150 Deg
 Housing Die Cast Aluminium
 LEDs 2w Cree
 LED Colours C/W W/W N/W
 Environment IP44
 Approvals CE and Rohs Compliant

X=Wattage 5w 6.5w 7.5w Y= LED Colour



AR111-16 Watt Retrofit

Lumen Output 1640
 Efficacy 135lm/W C/W
 Colour Temperature C/W 600K-7000K
 Rated Life 50,000 Hours
 CRI 85
 Mounting RetroFit
 Dimensions 110.5mm x 38mm

Order code ED51-AR111-16W-X-Y

Input Power 220-240 Volts
 Beam Spread 8-25-40-60 Degs
 Housing Die Cast Aluminium
 LEDs Cree
 LED Colours C/W N/W W/W
 Environment IP55
 Approvals CE and Rohs Compliant

X=LED Colour Y= Beam Angle



AR111-12 Watt Retrofit

Lumen Output 1100
 Efficacy 135lm/W C/W
 Colour Temperature C/W 600K-7000K
 Rated Life 50,000 Hours
 CRI 85
 Mounting RetroFit
 Dimensions 110.5mm Dia x 50mm

Order code ED51-AR111-12W-X-Y-

Input Power 220-240 Volts
 Beam Spread 8-25-40-60 Degs
 Housing Die Cast Aluminium
 LEDs Cree
 LED Colours C/W N/W W/W
 Environment IP55
 Approvals CE and Rohs Compliant

X=LED Colour Y= Beam Angle

Various Retrofit Lamps Available

RetroFit Lamps



Creed & Cruz 3x1W GU10 MR16 Retrofits

Lumen Output 420
 Efficacy 84lm/W C/W
 Colour Temperature C/W 600K-7000K
 Rated Life 50,000 Hours
 CRI 85
 Mounting RetroFit Cut Out 50mm
 Dimensions 49.5 Dia x 50mm GU10 58mm

Order code ED46-CRUZ-X-Y ED46-CREED-X-Y

Input Power 220-240 Volts MR16 12Volts
 Beam Spread 15°/30°/60° Degs
 Housing Die Cast Aluminium
 LEDs Cree
 LED Colours C/W W/W
 Environment IP44
 Approvals CE and Rohs Compliant

X = Beam Angle

Y = LED Colour

3x2w Also Available



Creed3 5x1W MR16 Dimmable Retrofits

Lumen Output 650
 Efficacy 108lm/W C/W
 Colour Temperature 600K-7000K
 Rated Life 50,000 Hours
 CRI 85
 Mounting RetroFit
 Dimensions 50mm x 58mm

Order code ED46-CREED3-X-Y

Input Power 12 Volts
 Beam Spread 30-60 Degs
 Housing Aluminium
 LEDs High Power Cree
 LED Colours C/W W/W
 Environment IP44
 Approvals CE and Rohs Compliant

X = LED Colour

Y = ND = Non Dimmable D = Dimmable



CRUZ3-5x1W DIMMABLE GU10

Lumen Output 650
 Efficacy 108lm/W C/W
 Colour Temperature C/W 600K-7000K
 Rated Life 50,000 Hours
 CRI 85
 Mounting RetroFit
 Dimensions 600mm TO 76mm

Order code ED46-CRUZ3-X-Y-Z

Input Power 220-240 Volts
 Beam Spread 30-60 Degs
 Housing Aluminium
 LEDs High Power Cree
 LED Colours C/W W/W
 Environment IP44
 Approvals CE and Rohs Compliant

X = LED Colour

Y = ND = Non Dimmable D = Dimmable



PAR30-A 9 or 18 Watt E27/E26

Lumen Output 680
 Efficacy 135lm/W C/W
 Colour Temperature C/W 600K-7000K
 Rated Life 50,000 Hours
 CRI 85
 Mounting RetroFit
 Dimensions 95mm Dia x 118mm

Order code ED36-PAR30-A-X-Y-Z

Input Power 220-240 Volts
 Beam Spread 8/15/40/60/140
 Housing Die Cast Aluminium
 LEDs 4 x 2w Cree
 LED Colours C/W W/W
 Environment IP44
 Approvals CE and Rohs Compliant

X=LED Colour

Y= Beam Angle Z = Wattage 6x1w or 6x2w



PAR30-B 9 or 18 Watt E27/E26

Lumen Output 680
 Efficacy 135lm/W C/W
 Colour Temperature C/W 600K-7000K
 Rated Life 50,000 Hours
 CRI 85
 Mounting RetroFit
 Dimensions 95mm Dia x 118mm

Order code ED36-PAR30-B-X-Y-Z

Input Power 220-240 Volts
 Beam Spread 30-60 Degs
 Housing Die Cast Aluminium
 LEDs 4 x 2w Cree
 LED Colours C/W W/W IP65
 Environment IP44
 Approvals CE and Rohs Compliant

X=LED Colour

Y= Beam Angle Z = Wattage 6x1w or 6x2w



PAR38-A 12 or 24 Watt E27/E26

Lumen Output 1100
 Efficacy 135lm/W C/W
 Colour Temperature C/W 600K-7000K
 Rated Life 50,000 Hours
 CRI 85
 Mounting RetroFit
 Dimensions 122mm Dia x 118mm

Order code ED36-PAR38-A-X-Y-Z

Input Power 220-240 Volts
 Beam Spread 15/25/60/140 Degs
 Housing Die Cast Aluminium
 LEDs Cree
 LED Colours C/W W/W
 Environment IP44
 Approvals CE and Rohs Compliant

X=LED Colour

Y= Beam Angle Z = Wattage 12x1w or 12x2w



PAR38-B 12 or 24 Watt E27/E26

Lumen Output 1100
 Efficacy 135lm/W C/W
 Colour Temperature C/W 600K-7000K
 Rated Life 50,000 Hours
 CRI 85
 Mounting RetroFit
 Dimensions 122mm x 118mm

Order code ED36-PAR38-B-X-Y-Z

Input Power 220-240 Volts
 Beam Spread 15/25/60/140 Degs
 Housing Die Cast Aluminium
 LEDs Cree
 LED Colours C/W W/W
 Environment IP44
 Approvals CE and Rohs Compliant

X=LED Colour

Y= Beam Angle Z = Wattage 12x1w or 12x2w



G24-E27 PLC 8LED 8 Watt

Lumen Output 1080
 Efficacy 135lm/W C/W
 Colour Temperature C/W 600K-7000K
 Rated Life 50,000 Hours
 CRI 85
 Mounting Surface
 Dimensions 40mm dia x 176mm

Order code ED34-PLC-3-X-Y

Input Power 220-240 Volts
 Beam Spread 130-160-180 Degs
 Housing Machined Aluminium
 LEDs Cree
 LED Colours C/W W/W
 Environment IP65
 Approvals CE and Rohs Compliant

X=LED Colour

W/W = Warm White C/W = Cool White

Landscape & Floodlights



TORNADO-1 10 Watt Flood

Lumen Output 1000
Efficacy 100lm/W C/W
Colour Temperature C/W 600K-7000K
Rated Life 50,000 Hours
CRI 85
Mounting Bracket
Dimensions 114.5mm x 86mm

Order code ED10-TOR-1-X-Y-Z

Input Power 12v dc or 220-240 Volts
Beam Spread 120 Degs
Housing Die Cast Aluminium
LEDs 1 x 10w Multichip
LED Colours C/W W/W Red Green Blue Amber RGB
Environment IP65
Approvals CE and Rohs Compliant

X=Power 12Vdc - 240Vac Y= Beam Angle 60 = B - 120 = A Z=LED Colour



TORNADO-2 20-30 Watt Flood

Lumen Output 1450-2400
Efficacy 80lm/W C/W
Colour Temperature C/W 600K-7000K
Rated Life 50,000 Hours
CRI 85
Mounting Bracket
Dimensions 225mm x 185mm

Order code ED10-TOR-2-X-Y-Z

Input Power 220-240 Volts
Beam Spread 60 or 120 Degs
Housing Die Cast Aluminium
LEDs 1 x 20w or 30w Multichip
LED Colours C/W W/W Red Green Blue Amber RGB
Environment IP65
Approvals CE and Rohs Compliant

X=Wattage 20w - 30w Y= Beam Angle 60 = B - 120 = A Z=LED Colour



TORNADO-3 40-50 Watt Flood

Lumen Output 3000-4000
Efficacy 80lm/W C/W
Colour Temperature C/W 600K-7000K
Rated Life 50,000 Hours
CRI 85
Mounting Bracket
Dimensions 290mm x 236mm

Order code ED10-TOR-3-X-Y-Z

Input Power 220-240 Volts
Beam Spread 60 or 120 Degs
Housing Die Cast Aluminium
LEDs 1 x 40w or 50w Multichip
LED Colours C/W W/W Red Green Blue Amber RGB
Environment IP65
Approvals CE and Rohs Compliant

X=Wattage 40w - 50w Y= Beam Angle 60 = B - 120 = A Z=LED Colour



TORNADO-4 60 - 100 Watt Flood

Lumen Output 5800-9000
Efficacy 80lm/W C/W
Colour Temperature C/W 600K-7000K
Rated Life 50,000 Hours
CRI 85
Mounting Bracket
Dimensions 285mm x 360mm

Order code ED10-TOR-4-X-Y-Z

Input Power 220-240 Volts
Beam Spread 60 or 120 Degs
Housing Die Cast Aluminium
LEDs 1 x 60w 80w or 100w Multichip
LED Colours C/W W/W Red Green Blue Amber
Environment IP65
Approvals CE and Rohs Compliant

X=Wattage 60w-70w-80w-90w-100w Y= Beam Angle 60 = B - 120 = A Z=LED Colour



MATEO 18-36w LED Flood

Lumen Output 1,200-3,600
Efficacy 80lm/W C/W
Colour Temperature C/W 600K-7000K
Rated Life 50,000 Hours
CRI 85
Mounting Bracket
Dimensions 230mm Dia x 360mm

Order code ED20-MATEO-X-Y-Z

Input Power 220-240 Volts
Beam Spread 8-15-30-45-60 Degs
Housing Die Cast Aluminium
LEDs 18 - 36 x 2w Cree
LED Colours C/W W/W Red Green Blue Amber RGB
Environment IP65
Approvals CE and Rohs Compliant

X=Wattage 18w - 36w Y= Beam Angle Z=LED Colour



TREMOR-FL 36 LED Flood

Lumen Output 1,200-3,600
Efficacy 80lm/W C/W
Colour Temperature C/W 600K-7000K
Rated Life 50,000 Hours
CRI 85
Mounting Bracket
Dimensions 200mm Dia x 170mm

Order code ED90-TREM-FL-X-Y-Z

Input Power 220-240 Volts
Beam Spread 5-30-45 Degs
Housing Die Cast Aluminium
LEDs 18 - 36 x 2w Cree
LED Colours C/W W/W Red Green Blue Amber RGB
Environment IP65
Approvals CE and Rohs Compliant

X= Beam Angle Y=LED Colour



TORNIO 36 LED Flood

Lumen Output 3420
Efficacy 80lm/W C/W
Colour Temperature C/W 600K-7000K
Rated Life 50,000 Hours
CRI 85
Mounting Bracket
Dimensions 200mm Dia x 86mm

Order code ED55-TORNIO-36-X-Y-Z

Input Power 220-240 Volts
Beam Spread 6-15-25-40 Degs
Housing Machined Aluminium
LEDs Luxeon Rebel
LED Colours C/W N/W W/W Red Green Blue Amber RGB
Environment IP65
Approvals CE and Rohs Compliant

X=Driver DMX-350-36 or 3x D18CC-350-4-14 Y= Beam Angle Z=LED Colour



TREMOR 18-36 LED Flood

Lumen Output 1,200-3,600
Efficacy 80lm/W C/W
Colour Temperature C/W 600K-7000K
Rated Life 50,000 Hours
CRI 85
Mounting Bracket
Dimensions 210mm Dia x 194mm

Order code ED90-TREM-X-Y-Z

Input Power 220-240 Volts
Beam Spread 8-15-30-45-60 Degs
Housing Die Cast Aluminium
LEDs 18 - 36 x 2w Cree
LED Colours C/W W/W Red Green Blue Amber RGB
Environment IP65
Approvals CE and Rohs Compliant

X=18 or 36 Y=Beam Angle Z=LED Colour

Landscape & Floodlights



TORNIO-12 LED Flood Light

Lumen Output 1,582
Efficacy 52.7lm/W C/W
Colour Temperature C/W 600K-7000K
Rated Life 50,000 Hours
CRI 85
Mounting Bracket
Dimensions 150mm Dia x 62mm

Order code ED55-TORNIO-X-Y

Input Power 220-240 Volts
Beam Spread 6-15-25-40 Degs
Housing Machined Aluminium
LEDs Luxeon Rebel S/C Seoul Semi P5-RGB
LED Colours C/W W/W Red Green Blue Amber RGB
Environment IP67
Approvals CE and Rohs Compliant

X = Beam Angle Y = LED Colour



SIRONA-6 LED Flood Light

Lumen Output 864
Efficacy 70lm/W C/W
Colour Temperature C/W 600K-7000K
Rated Life 50,000 Hours
CRI 85
Mounting Bracket
Dimensions 100mm Dia x 62mm

Order code ED55-SIRONA-X-Y

Input Power 220-240 Volts
Beam Spread 6-15-25-40 Degs
Housing Machined Aluminium
LEDs Seoul Semi P4-S/C P5-RGB
LED Colours C/W W/W Red Green Blue Amber RGB
Environment IP67
Approvals CE and Rohs Compliant

X = Beam Angle Y = LED Colour



ERATO-3 LED Flood Light

Lumen Output 480
Efficacy 70lm/W C/W
Colour Temperature C/W 600K-7000K
Rated Life 50,000 Hours
CRI 85
Mounting Bracket
Dimensions 73mm Dia x 63mm

Order code ED55-ERATO-X-Y

Input Power 220-240 Volts
Beam Spread 6-15-25-40 Degs
Housing Machined Aluminium
LEDs Seoul Semi P4-S/C P5-RGB
LED Colours C/W W/W Red Green Blue Amber RGB
Environment IP67
Approvals CE and Rohs Compliant

X = Beam Angle Y = LED Colour



BULLET - 5 LED Flood Light c/w Spike

Lumen Output 560
Efficacy 60lm/W C/W
Colour Temperature C/W 600K-7000K
Rated Life 50,000 Hours
CRI 85
Mounting Spike
Dimensions 108mm Dia x 150mm

Order code ED60-BUL-SP-X-Y

Input Power 220-240 Volts
Beam Spread 25-45 Degs
Housing Die Cast Aluminium
LEDs 5 x 3w Cree RGB 3in1 LED
LED Colours C/W W/W Red Green Blue Amber RGB
Environment IP66
Approvals CE and Rohs Compliant

X = Beam Angle Y = LED Colour



BULLET - 5 LED Flood Light c/w Stand

Lumen Output 560
Efficacy 60lm/W C/W
Colour Temperature C/W 600K-7000K
Rated Life 50,000 Hours
CRI 85
Mounting Surface
Dimensions 108mm Dia x 150mm

Order code ED60-BUL-BA-X-Y

Input Power 220-240 Volts
Beam Spread 25-45 Degs
Housing Die Cast Aluminium
LEDs 5 x 3w Cree RGB 3in1 LED
LED Colours C/W W/W Red Green Blue Amber RGB
Environment IP66
Approvals CE and Rohs Compliant

X = Beam Angle Y = LED Colour



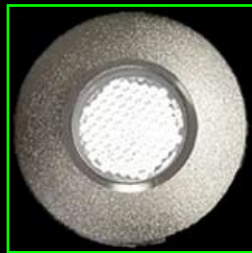
CYGNUS - 3 LED Flood Light

Lumen Output 350
Efficacy 60lm/W C/W
Colour Temperature C/W 600K-7000K
Rated Life 50,000 Hours
CRI 85
Mounting Spike
Dimensions 96mm Dia x 89mm

Order code ED60-CYGNUS-X-Y-Z

Input Power 220-240 Volts
Beam Spread 25-45 Degs
Housing Die Cast Aluminium
LEDs 3 x 3w Cree RGB 3in1 LED
LED Colours C/W W/W Red Green Blue Amber RGB
Environment IP66
Approvals CE and Rohs Compliant

X=Spike = Sp Base = Ba Y= Beam Angle Z=LED Colour



TRIDENT LED Deck Light

Lumen Output 100
Efficacy 60lm/W C/W
Colour Temperature C/W 600K-7000K
Rated Life 50,000 Hours
CRI 85
Mounting Recessed
Dimensions 40mm Dia x 45mm

Order code ED05-TRIDENT-X-Y

Input Power 220-240 Volts
Beam Spread 25-45 Degs
Housing Die Cast Aluminium
LEDs 1W OR 3w Cree Or Osram
LED Colours C/W W/W Red Green Blue Amber RGB
Environment IP66
Approvals CE and Rohs Compliant

X = Beam Angle Y = LED Colour



POLARIS-LED Deck Light

Lumen Output 100
Efficacy 60lm/W C/W
Colour Temperature C/W 600K-7000K
Rated Life 50,000 Hours
CRI 85
Mounting Recessed
Dimensions 50mm Dia x 25mm

Order code ED55-POLARIS-X-Y

Input Power 220-240 Volts
Beam Spread 8-15-30-45-60 Degs
Housing Die Cast Aluminium
LEDs 1 X Luxeon Rebel S/C 3XRGB
LED Colours C/W W/W Red Green Blue Amber RGB
Environment IP67
Approvals CE and Rohs Compliant

X = Beam Angle Y = LED Colour

Uplights & Pool Lights



LEPUS-IG 3-6 LED Inground Up Light

Lumen Output 300-600
Efficacy 60lm/W C/W
Colour Temperature C/W 600K-7000K
Rated Life 50,000 Hours
CRI 85
Mounting Recessed
Dimensions 103mm Dia x 60mm

Order code ED60-LEP-IG-X-Y-Z

Input Power 24 Volts
Beam Spread 25-45 Degs
Housing Die Cast Aluminium
LEDs 3w Cree
LED Colours C/W W/W Red Green Blue Amber RGB
Environment IP67
Approvals CE and Rohs Compliant

X = Type A=3LED B=6LED Y = Beam Angle Z = LED Colour RGB 3 in 1 LED



LEPUS-IG 6-7 LED Inground Up Light

Lumen Output 600-700
Efficacy 60lm/W C/W
Colour Temperature C/W 600K-7000K
Rated Life 50,000 Hours
CRI 85
Mounting Recessed
Dimensions 162mm Dia x 115mm

Order code ED60-LEP-IG-X-Y-Z

Input Power 24 Volts
Beam Spread 25-45 Degs
Housing Die Cast Aluminium
LEDs 3w Cree
LED Colours C/W W/W Red Green Blue Amber RGB
Environment IP67
Approvals CE and Rohs Compliant

X = Type A=3LED B=6LED Y = Beam Angle Z = LED Colour RGB 3 in 1 LED



ELVIRA 12-21 LED Inground Up Light

Lumen Output 1200 -2100
Efficacy 65lm/W C/W
Colour Temperature C/W 600K-7000K
Rated Life 50,000 Hours
CRI 85
Mounting Recessed
Dimensions 212-274mm Dia x 235mm

Order code ED25-ELVIRA-X-Y

Input Power 220-240 Volts
Beam Spread 15-25-45 Degs
Housing Die Cast Aluminium
LEDs 1W OR 3w Cree Or Osram
LED Colours C/W W/W Red Green Blue Amber RGB
Environment IP67
Approvals CE and Rohs Compliant

X = Type 12L 15R 18L 21R Y = Beam Angle Z = LED Colour



LUPUS LED Pool Light

Lumen Output 850
Efficacy 60lm/W C/W
Colour Temperature C/W 600K-7000K
Rated Life 50,000 Hours
CRI 85
Mounting Recessed
Dimensions 152mm Dia x 150mm

Order code ED60-LUPUS-X-Y-Z

Input Power 220-240 Volts
Beam Spread 8-15-30-45-60 Degs
Housing Die Cast Aluminium
LEDs 3w Cree C/W W/W Red Green Blue
LED Colours Amber RGB
Environment IP67
Approvals CE and Rohs Compliant

X = Type A = 7 LED B = 9 LED Y = Beam Angle Z = LED Colour



AQUA LED Outdoor and Underwater Light

Lumen Output 100
Efficacy 60lm/W C/W
Colour Temperature C/W 600K-7000K
Rated Life 50,000 Hours
CRI 85
Mounting Surface
Dimensions 64mm x 25mm

Order code ED55-AQUA-X-Y

Input Power 220-240 Volts
Beam Spread 120 Degs
Housing Aluminium
LEDs Luxeon Rebel
LED Colours C/W W/W Red Green Blue Amber RGB
Environment IP68
Approvals CE and Rohs Compliant

X = 3-6-9-12 LED String Y = LED Colour



TREMOR-PL LED Fountain & Pool Light

Lumen Output 600-1250
Efficacy 60lm/W C/W
Colour Temperature C/W 600K-7000K
Rated Life 50,000 Hours
CRI 85
Mounting Surface - Underwater
Dimensions 170-210mm Dia x 180mm

Order code ED90-TREMOR-PL-X-Y

Input Power 24 Volts
Beam Spread 15-30-45 Degs
Housing Aluminium
LEDs 3w Cree
LED Colours C/W W/W Red Green Blue Amber RGB
Environment IP68
Approvals CE and Rohs Compliant

X = Type A = 18 LED B = 36 E = 36 LED Y = Beam Angle Z = LED Colour



CORINTH LED Fountain & Pool Light

Lumen Output 548
Efficacy 60lm/W C/W
Colour Temperature C/W 600K-7000K
Rated Life 50,000 Hours
CRI 85
Mounting Surface
Dimensions 150mm Dia x 32mm

Order code ED60-CORINTH-X-Y

Input Power 24 Volts
Beam Spread 45 Degs
Housing Aluminium
LEDs 3w Cree
LED Colours C/W W/W Red Green Blue Amber RGB
Environment IP68
Approvals CE and Rohs Compliant

X = Beam Angle Y = LED Colour



TAURUS LED Fountain & Pool Light

Lumen Output 548
Efficacy 60lm/W C/W
Colour Temperature C/W 600K-7000K
Rated Life 50,000 Hours
CRI 85
Mounting Surface
Dimensions 150mm Dia x 32mm

Order code ED60-TAURUS-X-Y

Input Power 24 Volts
Beam Spread 25-45 Degs
Housing Aluminium
LEDs 3w Cree
LED Colours C/W W/W Red Green Blue Amber RGB
Environment IP68
Approvals CE and Rohs Compliant

X = Beam Angle Y = LED Colour

Linear & Wallwash Lights



TAMARA-12-48 LED Linear Profile Light

Lumen Output 1982 - 3480
 Efficacy 63.7lm/W C/W
 Colour Temperature C/W 600K-7000K
 Rated Life 50,000 Hours
 CRI 85
 Mounting Surface-Bracket
 Dimensions 600-1200mm x 48mm

Order code ED55-TAMARA-X-Y-Z

Input Power 220-240 Volts
 Beam Spread 6-15-25-40 - 25x40 Degs
 Housing Machined Aluminium
 LEDs Luxeon Rebel
 LED Colours C/W W/W Red Green Blue Amber RGB
 Environment IP50- IP67
 Approvals CE and Rohs Compliant

X = Beam Angle Y = LED Colour Z = IP54 or IP67



TAMARA Gullwing-24-96 LED Linear Profile Light

Order code ED55-TAMARA-G-X-Y-Z

Lumen Output 3480 - 7680
 Efficacy 63.7lm/W C/W
 Colour Temperature C/W 600K-7000K
 Rated Life 50,000 Hours
 CRI 85
 Mounting Surface-Bracket
 Dimensions 600-1200mm x 48mm

Input Power 220-240 Volts
 Beam Spread 6-15-25-40 - 25x40 Degs
 Housing Machined Aluminium
 LEDs Luxeon Rebel
 LED Colours C/W W/W Red Green Blue Amber RGB
 Environment IP50- IP67
 Approvals CE and Rohs Compliant

X = Beam Angle Y = LED Colour Z = IP54 or IP67



PETRINA-12-48 LED Wallwash Light

Order code ED55-PETRINA-X-Y-Z

Lumen Output 774 - 1548
 Efficacy 51.6lm/W C/W
 Colour Temperature C/W 600K-7000K
 Rated Life 50,000 Hours
 CRI 85
 Mounting Surface-Bracket
 Dimensions 600-1200mm x 48mm

Input Power 220-240 Volts
 Beam Spread 6-15-25-40 - 25x40 Degs
 Housing Machined Aluminium
 LEDs Luxeon Rebel
 LED Colours C/W W/W Red Green Blue Amber RGB
 Environment IP50- IP67
 Approvals CE and Rohs Compliant

X = Beam Angle Y = LED Colour Z = IP50 or IP67



IMAGO-12-48 LED Wallwash Light

Order code ED95-IMAGO-X-Y-Z

Lumen Output 2100
 Efficacy 51.6lm/W C/W
 Colour Temperature C/W 600K-7000K
 Rated Life 50,000 Hours
 CRI 85
 Mounting Surface-Bracket
 Dimensions 500-1000mm x 108mm

Input Power 220-240 Volts
 Beam Spread 8-12-30-45- 60 Degs
 Housing Extruded Aluminium
 LEDs 3w Cree
 LED Colours C/W W/W Red Green Blue Amber RGB
 Environment IP50- IP67
 Approvals CE and Rohs Compliant

X = Beam Angle Y = LED Colour Z = IP54 or IP67



LOTIS Mini Profile LED Linear Light

Order code ED55-LOTIS-X-Y-Z

Lumen Output 160 - 1680
 Efficacy 63.7lm/W C/W
 Colour Temperature C/W 600K-7000K
 Rated Life 50,000 Hours
 CRI 85
 Mounting Surface-Bracket
 Dimensions 30mm x 10mm x Length

Input Power 12 Volts DC
 Beam Spread 120 Degs
 Housing Extruded Aluminium
 LEDs Luxeon Rebel
 LED Colours C/W W/W Red Green Blue Amber RGB
 Environment IP50- IP67
 Approvals CE and Rohs Compliant

X = Length 100mm to 1000mm Y = LED Colour Z = IP54 or IP67



CRATOR-12-36 LED Wallwash Light

Order code ED55-CRATOR-X-Y-Z

Lumen Output 1200-3240
 Efficacy 63.7lm/W C/W
 Colour Temperature C/W 600K-7000K
 Rated Life 50,000 Hours
 CRI 85
 Mounting Inground
 Dimensions 600-1200mm x 48mm

Input Power 220-240 Volts
 Beam Spread 30-45-60 Degs
 Housing Stainlee Steel Aluminium
 LEDs 3w Cree
 LED Colours C/W W/W Red Green Blue Amber RGB
 Environment IP67
 Approvals CE and Rohs Compliant

X = Type 12 18 24 36 Y = LED Colour Z = Beam Angle



ELEKTRA 36 LED Wallwash Light

Order code ED95-ELEKTRA-A-RGB X-Y-Z

Lumen Output 3100
 Efficacy 63.7lm/W C/W
 Colour Temperature C/W 600K-7000K
 Rated Life 50,000 Hours
 CRI 85
 Mounting Bracket
 Dimensions 200mm Dia x 143mm

Input Power 220-240 Volts
 Beam Spread 30-45-60 10x40 Degs
 Housing Machined Aluminium
 LEDs 3w Cree
 LED Colours RGB
 Environment IP67
 Approvals CE and Rohs Compliant

X = Beam Angle Y = LED Colour Z = IP54 or IP67



ELEKTRA-B 36 LED Wallwash Light

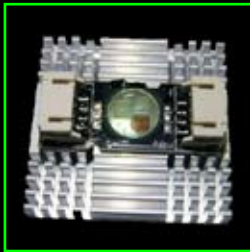
Order code ED95-ELEKTRA-B-X-Y-Z

Lumen Output 3100
 Efficacy 63.7lm/W C/W
 Colour Temperature C/W 600K-7000K
 Rated Life 50,000 Hours
 CRI 85
 Mounting Bracket
 Dimensions 155-378mm x 131mm High

Input Power 220-240 Volts
 Beam Spread 15-45 10x40 Degs
 Housing Cast Aluminium
 LEDs 3w Cree
 LED Colours C/W W/W Red Green Blue Amber RGB
 Environment IP65
 Approvals CE and Rohs Compliant

X = Beam Angle Y = LED Colour Z = IP54 or IP67

Flexible Plug and Play



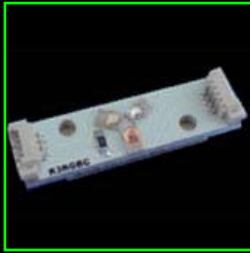
LINKER RGB S/C LED Module

Lumen Output 135 Typical
 Efficacy 63.7lm/W C/W
 Colour Temperature C/W 600K-7000K
 Rated Life 50,000 Hours
 CRI 85
 Mounting Surface
 Dimensions 34mm x 34mm x 7mm

Order code ED55-LYNX-X-Y-Z

Input Power 350mA
 Beam Spread 120 Degs
 Housing Aluminium
 LEDs Seoul TriLED
 LED Colours C/W W/W Red Green Blue Amber RGB
 Environment IP44 OR IP67
 Approvals CE and Rohs Compliant

X = Beam Angle Y = LED Colour Z = IP44 or IP67



LYNX RGB LED Plug and Play Module

Lumen Output 129 Typical
 Efficacy 63.7lm/W C/W
 Colour Temperature C/W 600K-7000K
 Rated Life 50,000 Hours
 CRI 85
 Mounting Surface
 Dimensions 37.5mm x 7.5mm x 4.5mm

Order code ED55-LYNX-X-Y-Z

Input Power 12 Volts DC
 Beam Spread 120 Degs
 Housing Aluminium
 LEDs Luxeon Rebel
 LED Colours RGB
 Environment IP20
 Approvals CE and Rohs Compliant

X = Beam Angle Y = LED Colour Z = IP54 or IP67



LYNX S/C LED Plug and Play Module

Lumen Output 73.5 Typical
 Efficacy 53.7lm/W C/W
 Colour Temperature C/W 600K-7000K
 Rated Life 50,000 Hours
 CRI 85
 Mounting Surface
 Dimensions 37.5mm x 7.5mm x 4.5mm

Order code ED55-LYNX-X-Y

Input Power 12 Volts DC
 Beam Spread 120 Degs
 Housing Aluminium
 LEDs Luxeon Rebel
 LED Colours C/W W/W Red Green Blue Amber
 Environment IP20
 Approvals CE and Rohs Compliant

X = 3-6-9-12 LED String Y = Connection Cable 100mm 150mm 200mm



Linkable RGB Pixel lamp 3x3in1 LEDs

Lumen Output RGB Various
 Efficacy RGB Various
 Colour Temperature C/W 600K-7000K
 Rated Life 50,000 Hours
 CRI 85
 Mounting Surface
 Dimensions 35-50mm Dia

Order code ED26-RGB-PS-X-Y

Input Power 12 Volts DC
 Beam Spread 120 Degs
 Housing Waterproof Flex pcb
 LEDs High Power SMD
 LED Colours RGB 3in1 LEDs
 Environment IP65
 Approvals CE and Rohs Compliant

X = Size =35mm or 50mm Y = LED Colour Please Refer to Data Sheets on Website



Linkable RGB Pixel Lamp 12-18x3in1 LEDs

Lumen Output RGB Various
 Efficacy RGB Various
 Colour Temperature C/W 600K-7000K
 Rated Life 50,000 Hours
 CRI 85
 Mounting Surface
 Dimensions 100-120mm Dia

Order code ED26-RGBP-X-Y

Input Power 12 Volts DC
 Beam Spread 120 Degs
 Housing Waterproof
 LEDs High Power SMD
 LED Colours RGB 3in1 LED
 Environment IP65
 Approvals CE and Rohs Compliant

X = LED qty 12 or 18 Y Size = 120mm or 100mm Please Refer to Data Sheets on Website



SERPENT Flex 600 LED Flexible Light

Lumen Output 1000 per metre
 Efficacy 52lm/W C/W
 Colour Temperature C/W 600K-7000K
 Rated Life 50,000 Hours
 CRI 85
 Mounting Surface
 Dimensions 14mm x 6.5mm x 5m Length

Order code ED95-SF-ID-X-Y-Z

Input Power 12 Volts DC
 Beam Spread 120 Degs
 Housing Flex pcb
 LEDs High Power SMD
 LED Colours C/W W/W
 Environment IP2067
 Approvals CE and Rohs Compliant

X = Length 1m-5m Y = LED Colour Please Refer to Data Sheets on Website



SERPENT Flex LED Flexible Light

Lumen Output 2400 = c/w
 Efficacy 45lm/W C/W
 Colour Temperature C/W 600K-7000K
 Rated Life 50,000 Hours
 CRI 85
 Mounting Surface
 Dimensions 14mm x 6mm x 5m Length

Order code ED95-SF-TWF-X-Y

Input Power 12 Volts DC
 Beam Spread 120 Degs
 Housing Waterproof Flex pcb
 LEDs High Power SMD
 LED Colours C/W W/W Red Green Blue Amber RGB
 Environment IP65
 Approvals CE and Rohs Compliant

X = Length 1m-5m Y = LED Colour Please Refer to Data Sheets on Website



SERPENT Flex Digital LED Flexible Light

Lumen Output 825 = c/w
 Efficacy 45lm/W C/W
 Colour Temperature C/W 600K-7000K
 Rated Life 50,000 Hours
 CRI 85
 Mounting Surface
 Dimensions 14mm x 6mm x 5m Length

Order code ED95-SF-DID-X-Y

Input Power 12 Volts DC
 Beam Spread 120 Degs
 Housing Waterproof Flex pcb
 LEDs High Power SMD
 LED Colours C/W W/W Red Green Blue Amber RGB
 Environment IP65
 Approvals CE and Rohs Compliant

X = Length 1m-100m Y = LED Colour Please Refer to Data Sheets on Website

New Products 2011



AR111 15W 12VDC

Lumen Output 1500
 Efficacy 100lm/W C/W
 Colour Temperature C/W 600K-7000K
 Rated Life 50,000 Hours
 CRI 85
 Mounting RetroFit
 Dimensions 111mm Dia x 70.8mm

Order code ED20-AR111-REF-X-Y-Z

Input Power 220-240 Volts
 Beam Spread 15-30 Degs
 Housing Machined Aluminium
 LEDs Cree
 LED Colours C/W N/W W/W
 Environment IP20
 Approvals CE and Rohs Compliant

X=Driver DMX-350-36 or 3x D18CC-350-4-14

Y= Beam Angle Z=LED Colour



CORVUS 600 X 600 Panel

Lumen Output 3,240
 Efficacy 90lm/W C/W
 Colour Temperature C/W 600K-7000K
 Rated Life 50,000 Hours
 CRI 85
 Mounting Surface-Recessed-Suspended
 Dimensions 600mm x 600mm

Order code ED61-CORV-60-X-Y-Z

Input Power 100-240 Volts
 Beam Spread 120 Degs
 Housing Die Cast Aluminium
 LEDs SMD High Brightness
 LED Colours C/W W/W Red Green Blue Amber
 Environment IP44
 Approvals CE and Rohs Compliant

X=Size Y= Mounting Options Surface-Recessed-Suspended Z=LED Colour



CORVUS 1200 X 600 PANEL

Lumen Output 6,480
 Efficacy 90lm/W C/W
 Colour Temperature C/W 600K-7000K
 Rated Life 50,000 Hours
 CRI 85
 Mounting Surface-Recessed-Suspended
 Dimensions 1200mm x 600mm

Order code ED61-CORV-612-X-Y-Z

Input Power 100-240 Volts
 Beam Spread 120 Degs
 Housing Die Cast Aluminium
 LEDs SMD High Brightness
 LED Colours C/W W/W Red Green Blue Amber RGB
 Environment IP65
 Approvals CE and Rohs Compliant

X=Size Y= Mounting Options Surface-Recessed-Suspended Z=LED Colour



HiBay 60w to 100 watt HIGHBAY

Lumen Output 5800-9000
 Efficacy 90lm/W C/W
 Colour Temperature C/W 600K-7000K
 Rated Life 50,000 Hours
 CRI 85
 Mounting Suspended
 Dimensions 515mm Dia x 441mm

Order code ED61-HiBay-X-Y-Z

Input Power 220-240 Volts
 Beam Spread 60 or 120 Degs
 Housing Die Cast Aluminium
 LEDs 1 x 60w 80w or 100w Multichip
 LED Colours C/W W/W Red Green Blue Amber
 Environment IP65
 Approvals CE and Rohs Compliant

X=Wattage 60w - 80w-100w Y= Beam Angle 60 = B - 120 = A Z=LED Colour



UP-DOWN WALLLIGHT 2X5W LED

Lumen Output 1280
 Efficacy 90lm/W C/W
 Colour Temperature C/W 600K-7000K
 Rated Life 50,000 Hours
 CRI 85
 Mounting Wall Mounted
 Dimensions 150mm Dia x 60mm

Order code ED26-UD-X-Y

Input Power 220-240 Volts
 Beam Spread 30 or 60 Degs
 Housing Die Cast Aluminium
 LEDs 2x4LED 5w Cree
 LED Colours C/W W/W Red Green Blue Amber
 Environment IP65
 Approvals CE and Rohs Compliant

X= Beam Angle 30 = A - 60 = B Y=LED Colour



PENDANT LIGHT 6X3W LED

Lumen Output 760
 Efficacy 90lm/W C/W
 Colour Temperature C/W 600K-7000K
 Rated Life 50,000 Hours
 CRI 85
 Mounting Suspended
 Dimensions 99mm Dia x 148mm

Order code ED20-PEN-X-Y

Input Power 220-240 Volts
 Beam Spread 30 or 45 Degs
 Housing Die Cast Aluminium
 LEDs 6X3W LED Cree
 LED Colours C/W W/W Red Green Blue Amber
 Environment IP44
 Approvals CE and Rohs Compliant

X= Beam Angle 30 = A - 60 = B Y=LED Colour



TORNADO-5 120 - 200 Watt Flood

Lumen Output 19,000
 Efficacy 95lm/W C/W
 Colour Temperature C/W 600K-7000K
 Rated Life 50,000 Hours
 CRI 85
 Mounting Wall Mounted
 Dimensions 310mm x 160mm

Order code ED10-TOR-5-X-Y-Z

Input Power 220-240 Volts
 Beam Spread 45 or 120 Degs
 Housing Die Cast Aluminium
 LEDs 2 x 100W LED
 LED Colours C/W W/W Red Green Blue Amber
 Environment IP65
 Approvals CE and Rohs Compliant

X= Beam Angle 30 = A - 60 = B Y=LED Colour Z Wattage 120-140-160-



Revo-760 100-150 Watt Street Light

Lumen Output 8,800 - 14,200
 Efficacy 90lm/W C/W
 Colour Temperature C/W 600K-7000K
 Rated Life 50,000 Hours
 CRI 85
 Mounting Pole
 Dimensions 800mm 340mm x 180mm

Order code ED61-REVO-X-Y

Input Power 220-240 Volts
 Beam Spread 150 Degs
 Housing Die Cast Aluminium
 LEDs High Power BridgeLux Multichip
 LED Colours C/W N/W W/W
 Environment IP65
 Approvals CE and Rohs Compliant

X=Wattage 100-120-150

Z=LED Colour

New Products 2011



CARMA-40 10-18WATT Surface LED light

Lumen Output 680-1280
Efficacy 70lm/W C/W
Colour Temperature C/W 600K-7000K
Rated Life 50,000 Hours
CRI 85
Mounting Surface
Dimensions 410mm x 102mm

X = Wattage

Y = LED Colour

Order code ED50-CARMA-40-X-Y

Input Power 220-240 Volts
Beam Spread 150 Degs
Housing Aluminium
LEDs High Power Cree
LED Colours C/W W/W Red Green Blue Amber RGB
Environment IP44
Approvals CE and Rohs Compliant



CARMA-41 10-18WATT Surface LED light

Lumen Output 680-1280
Efficacy 70lm/W C/W
Colour Temperature C/W 600K-7000K
Rated Life 50,000 Hours
CRI 85
Mounting Surface
Dimensions 405mm x 102mm

X = Wattage

Y = LED Colour

Order code ED50-CARMA-41-X-Y

Input Power 220-240 Volts
Beam Spread 150 Degs
Housing Aluminium
LEDs High Power Cree
LED Colours C/W W/W Red Green Blue Amber
Environment IP44
Approvals CE and Rohs Compliant



DEVON LED PANEL 37W & 74W

Lumen Output 4805-9610
Efficacy 90C/W
Colour Temperature 300K-7000K
Rated Life 50,000 Hours
CRI 85
Mounting Recessed
Dimensions 30-60cm x 60-120cm x 54mm

X = 603=600 X 600 123 =1200 X 300 126 = 1200 X 600

Order code ED42-DEV-X-Y

Input Power 220-240 Volts
Beam Spread 120 Degs
Housing Aluminium & Optical Panel
LEDs Cree SMD
LED Colours C/W N/W W/W
Environment IP44
Approvals CE and Rohs Compliant

Y = LED Colour



LED Profile Strip

Lumen Output 500-1200
Efficacy 95lm/W C/W
Colour Temperature C/W 600K-7000K
Rated Life 50,000 Hours
CRI 85
Mounting Surface
Dimensions 500mm TO 1000mm

X = LED Qty 1M=60 OR 72 500MM = 30 OR 36

Order code ED77-PS-X-Y-Z

Input Power 220-240 Volts
Beam Spread 120 Degs
Housing Aluminium
LEDs Cree SMD
LED Colours C/W W/W Red Green Blue Amber RGB
Environment IP44- IP65
Approvals CE and Rohs Compliant

Y = LED Colour Z = IP44 or IP65



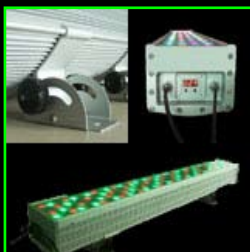
BEAM 18LED RGB Wallwasher

Lumen Output 2040
Efficacy 90lm/W C/W
Colour Temperature RGB 2200K-4500K
Rated Life 50,000 Hours
CRI 85
Mounting Surface
Dimensions 200mm Dia x 50mm

X=LED Colour Y= Beam Angle RGB = 18 X 3 in 1 LED

Order code ED95-BEAM-RGB-X-Y

Input Power 220-240 Volts
Beam Spread 125x75 or 10x60 Degs
Housing Machined Aluminium
LEDs Cree
LED Colours RGB
Environment IP65
Approvals CE and Rohs Compliant



PYTHEA-18-144 LEDs DMX Controlled

Lumen Output N/A VARIOUS
Efficacy 85lm/W C/W
Colour Temperature C/W 600K-7000K
Rated Life 50,000 Hours
CRI 85
Mounting Surface
Dimensions Various see data sheets

X=LED Colour Y= S/C Single Colour RGB = RED GREEN BLUE X = WATTS 18 - 160

Order code ED62-PYTHEA-X-Y-Z

Input Power 220-240 Volts
Beam Spread 15-30-45 Degs
Housing Machined Aluminium
LEDs Cree
LED Colours S/C OR RGB
Environment IP65
Approvals CE and Rohs Compliant



DIGI-LED-TUBE 12W

Lumen Output 1100
Efficacy 135lm/W C/W
Colour Temperature C/W 600K-7000K
Rated Life 50,000 Hours
CRI 85
Mounting Surface
Dimensions 26mm Dia x 1000mm

X=LED Colour Y= Beam Angle

Order code ED26-DIGL-X-Y

Input Power 220-240 Volts
Beam Spread 120 Degs
Housing White or Clear
LEDs Cree
LED Colours RGB IIC or DMX Control
Environment IP65
Approvals CE and Rohs Compliant



Dimmable Emergency Downlight

Lumen Output 1000-1800
Efficacy 100lm/W C/W
Colour Temperature C/W 600K-7000K
Rated Life 50,000 Hours
CRI 85
Mounting Recessed
Dimensions 235mm x 175mm

X=LED Colour Y= Beam Angle

Order code ED84-DEDL-10W-X-Y

Input Power 220-240 Volts
Beam Spread 80 Degs
Housing Die Cast Aluminium
LEDs Cree
LED Colours C/W N/W W/W
Environment IP55
Approvals CE and Rohs Compliant

New Products 2011



KYRO-A-40 10-15watt Surface LED light

Order code ED84-KYRO-A-X-Y-Z

Lumen Output 800-1440
Efficacy 70lm/W C/W
Colour Temperature C/W 600K-7000K
Rated Life 50,000 Hours
CRI 85
Mounting Surface
Dimensions 280mm x 102mm

Input Power 220-240 Volts
Beam Spread 120 Degs
Housing Aluminium & PC
LEDs Cree SMD
LED Colours C/W W/W
Environment IP65
Approvals CE and Rohs Compliant

X = Wattage Y = LED Colour Z = ST=Standard SE=Sensor EM=Emergency



KYRO-B 10-15watt Surface LED light

Order code ED84-KYRO-B-X-Y-Z

Lumen Output 800-1440
Efficacy 80lm/W C/W
Colour Temperature C/W 600K-7000K
Rated Life 50,000 Hours
CRI 85
Mounting Surface
Dimensions 280mm x 102mm

Input Power 220-240 Volts
Beam Spread 120 Degs
Housing Aluminium & PC
LEDs Cree SMD
LED Colours C/W W/W
Environment IP65
Approvals CE and Rohs Compliant

X = Wattage Y = LED Colour Z = ST=Standard SE=Sensor EM=Emergency



KYRO-C 10-30watt Surface LED light

Order code ED84-KYRO-C-X-Y-Z

Lumen Output 800-2400
Efficacy 80C/W
Colour Temperature 300K-7000K
Rated Life 50,000 Hours
CRI 85
Mounting Surface
Dimensions 315 x 315mm

Input Power 220-240 Volts
Beam Spread 120 Degs
Housing Aluminium & PC
LEDs Cree SMD
LED Colours C/W W/W
Environment IP65
Approvals CE and Rohs Compliant

X = Wattage Y = LED Colour Z = ST=Standard SE=Sensor EM=Emergency



MIRA 10-15watt Surface LED light

Order code ED84-MIRA-X-Y-Z

Lumen Output 800-1440
Efficacy 95lm/W C/W
Colour Temperature C/W 600K-7000K
Rated Life 50,000 Hours
CRI 85
Mounting Surface
Dimensions 310mm TO 100mm

Input Power 220-240 Volts
Beam Spread 120 Degs
Housing Aluminium & PC
LEDs Cree SMD
LED Colours C/W W/W
Environment IP44 - IP65
Approvals CE and Rohs Compliant

X = Wattage Y = LED Colour Z = ST=Standard SE=Sensor EM=Emergency



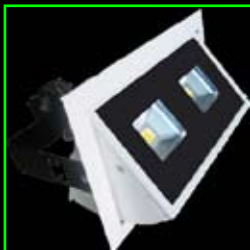
SAPPHIRE 30watt up down light

Order code ED95-SAPPH-X-Y

Lumen Output 1542
Efficacy 90lm/W C/W
Colour Temperature 2200K-6700K
Rated Life 50,000 Hours
CRI 85
Mounting Surface
Dimensions 120mm Dia x H 188mm

Input Power 220-240 Volts
Beam Spread 45 Degs
Housing Machined Aluminium
LEDs Cree
LED Colours C/W W/W
Environment IP67
Approvals CE and Rohs Compliant

X=LED Colour Y= Beam Angle



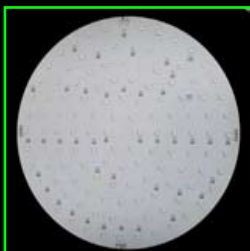
SIAM-Twin Adjustable Downlight

Order code ED10-SIAM-X-Y

Viewable Distance 2850m
Efficacy 95lm/W C/W
Colour Temperature C/W 600K-7000K
Rated Life 50,000 Hours
CRI 85
Mounting Flush with ground
Dimensions 148mm dia x 550mm

Input Power Solar Power
Beam Spread 70 or 150 Degs
Housing Machined Aluminium
LEDs 10mm
LED Colours C/W W/W Red Green Blue Amber
Environment IP67
Approvals CE and Rohs Compliant

X=LED Colour Y =Wattage 20w or 30w



400mm DIA RGB BOARD

Order code ED05-LRBL-X-Y-

Lumen Output 1500
Efficacy 70lm/W C/W
Colour Temperature C/W 600K-7000K
Rated Life 50,000 Hours
CRI 85
Mounting Surface
Dimensions 400mm Dia

Input Power 220-240 Volts
Beam Spread 120 Degs
Housing Aluminium pcb
LEDs Cree
LED Colours RGB IIC or DMX Control
Environment IP20
Approvals CE and Rohs Compliant

X=LED Colour Y= SIZE Aluminium Backed PCB boards made to specification



190X65mm 12Watt LED BOARD

Order code ED05-LSB-X-Y

Lumen Output 1000-1800
Efficacy 70lm/W C/W
Colour Temperature C/W 600K-7000K
Rated Life 50,000 Hours
CRI 85
Mounting Recessed
Dimensions 190mm x 65mm

Input Power 220-240 Volts
Beam Spread 120 Degs
Housing Aluminium pcb
LEDs Cree SMD
LED Colours C/W W/W Red Green Blue Amber RGB
Environment IP55
Approvals CE and Rohs Compliant

X=LED Colour Y= SIZE Aluminium Backed PCB boards made to specification

LED Emergency



SLIMLED Non Maintained LED Emergency Light

Order code **ED15-GR-8/12L**

Lumen Output	50
Battery	Ni - Cd 2.4/3Ah
Operating Temp	0 to 40 °C
Rated Life	50,000 hrs
Duration	3 Hours
Mounting	Wall-Ceiling-Suspended-Recessed
Dimensions	246mm x 76mm x 42mm

Input Power	220-240 Volts
Weight	1130 gr.
Housing	ABS,Polycarbonate.
Consumption	5.5VA
Viewing Distance	22 Metres
Environment	IP40
Approvals	CE and Rohs Compliant

TEST button



Easy LEDs Non Maintained LED Emergency Light

Order code **ED15-GR-312/6P**

Lumen Output	400
Battery	Ni - Cd 4.8/4Ah
Operating Temp	0 to 40 °C
Rated Life	50,000
Duration	3 Hours
Mounting	Wall-Ceiling-Suspended-Recessed
Dimensions	350mm x 134mm x 45mm

Input Power	220-240 Volts
Weight	1130 gr.
Housing	ABS,Polycarbonate.
Consumption	5.5VA
Viewing Distance	22 Metres
Environment	IP40
Approvals	CE and Rohs Compliant

TEST button



Intelligent Easy LEDs Maintained Emergency Light

Order code **ED15-GR-316/6P**

Lumen Output	400
Battery	Ni - Cd 4.8/4Ah
Operating Temp	0 to 40 °C
Rated Life	50,000
Duration	3 Hours
Mounting	Wall-Ceiling-Suspended-Recessed
Dimensions	246mm x 76mm x 42mm

Input Power	220-240 Volts
Weight	430gr.
Housing	ABS,Polycarbonate.
Consumption	8VA
Viewing Distance	22 Metres
Environment	IP40
Approvals	CE and Rohs Compliant

SELF-TESTING, Maintained Luminaires



Double Easy LEDs Maintained Emergency Light

Order code **ED15-GR-392**

Lumen Output	50
Battery	3.6V / 3Ah
Operating Temp	0 to 40 °C
Rated Life	50,000
Duration	3 Hours
Mounting	Wall-Ceiling
Dimensions	350mm x 134mm x 60mm

Input Power	220-240 Volts
Weight	920gr
Housing	ABS,Polycarbonate.
Consumption	7VA
Viewing Distance	22 Metres
Environment	IP40
Approvals	CE and Rohs Compliant

SELF-TESTING, Maintained Luminaires



Comfort LEDs Emergency Light

Order code **ED15-GR-423/6L ED15-GR-409/6L (NM)**

Lumen Output	150
Battery	4.8/4Ah Ni-Cd
Operating Temp	0 to 40 °C
Rated Life	50,000
Duration	3 Hours
Mounting	Wall-Ceiling-Suspended-Recessed
Dimensions	246mm x 76mm x 42mm

Input Power	110-240 Volts
Weight	1060gr
Housing	ABS,Polycarbonate.
Consumption	5VA
Viewing Distance	20 Metres
Environment	IP42
Approvals	CE and Rohs Compliant

SELF-TESTING, Maintained and Non-Maintained Luminaires and 110volts CBS = (ED15-GR-414/6L)



Weather LEDs Emergency Light

Order code **ED15-GR-939/6P ED15-GR-936/6P (NM)**

Lumen Output	400
Battery	4.8/4Ah Ni-Cd
Operating Temp	0 to 40 °C
Rated Life	50,000
Duration	3 Hours
Mounting	Wall-Ceiling-Suspended-Recessed
Dimensions	355mm x 160mm x 72mm

Input Power	220-240 Volts
Weight	1200gr
Housing	ABS,Polycarbonate.
Consumption	8VA
Viewing Distance	16-34 Metres
Environment	IP65
Approvals	CE and Rohs Compliant

SELF-TESTING, Maintained and Non-Maintained Luminaires



Eco Light LED Maintained Emergency Light

Order code **ED15-MLD-28-34-44**

Lumen Output	55
Battery	3.6V /1Ah
Operating Temp	0 to 40 °C
Rated Life	50,000
Duration	3 Hours
Mounting	Wall-Ceiling-Suspended
Dimensions	283mm x 130mm x 25mm

Input Power	110-240 Volts
Weight	430gr
Housing	ABS,Polycarbonate.
Consumption	8VA
Viewing Distance	16-34 Metres
Environment	IP40
Approvals	CE and Rohs Compliant

Maintained Edge Illumination Signs

Please check data sheets for ordering details



Lounge Light LED Maintained Emergency Light

Order code **ED15-SLD-28/SP-34-44-64**

Lumen Output	100
Battery	3.6V /1.5Ah
Operating Temp	0 to 40 °C
Rated Life	50,000
Duration	3 Hours
Mounting	Wall-Ceiling-Suspended
Dimensions	283mm x 130mm x 25mm

Input Power	110-240 Volts
Weight	1350gr
Housing	ABS,Polycarbonate.
Consumption	8VA
Viewing Distance	16-34 Metres
Environment	IP40
Approvals	CE and Rohs Compliant

Maintained Edge Illumination Signs

Please check data sheets for ordering details

LED Emergency



ECO LIGHT alum profile LED Emergency Light

Order code EDI5-SLD-28/SP-34-44-64

Lumen Output	75
Battery	3.6V /1Ah
Operating Temp	0 to 40 °C
Rated Life	50,000
Duration	3 Hours
Mounting	Wall-Ceiling-Suspended
Dimensions	290mm x 150mm x 38mm

Input Power	220-240 Volts
Weight	2950,gr
Housing	ABS,Polycarbonate.
Consumption	11VA
Viewing Distance	16-34 Metres
Environment	IP40
Approvals	CE and Rohs Compliant

Self-Testing, Maintained Edge Illumination Signs

Please check data sheets for ordering details



3D Light LED Emergency Light

Order code EDI5-GR-416/4P

Lumen Output	250
Battery	4.8V/3Ah
Operating Temp	0 to 40 °C
Rated Life	50,000
Duration	3 Hours
Mounting	Ceiling-Suspended
Dimensions	310mm x 310mm x 310mm

Input Power	110-240 Volts
Weight	1350gr
Housing	ABS,Polycarbonate.
Consumption	11VA
Viewing Distance	30 Metres
Environment	IP40
Approvals	CE and Rohs Compliant

Self-Testing Emergency Luminaires

Please check data sheets for ordering details



PROJECT LED Emergency Light

Order code ED15-GRL-824

Lumen Output	150
Battery	4.8V/1.5Ah
Operating Temp	0 to 40 °C
Rated Life	50,000
Duration	3 Hours
Mounting	Wall-Ceiling-Suspended
Dimensions	500mm x 264mm x 84mm

Input Power	220-240 Volts
Weight	850gr
Housing	ABS,Polycarbonate.
Consumption	8VA
Viewing Distance	30 Metres
Environment	IP40
Approvals	CE and Rohs Compliant

Self-testing, maintained (double sided)

Please check data sheets for ordering details



LIGHT BOX LED Emergency Light

Order code ED15-GRL-522

Lumen Output	150
Battery	3.6V /1Ah
Operating Temp	0 to 40 °C
Rated Life	50,000
Duration	3 Hours
Mounting	Wall-Ceiling-Suspended
Dimensions	500mm x 264mm x 84mm

Input Power	220-240 Volts
Weight	380gr
Housing	ABS,Polycarbonate.
Consumption	5VA
Viewing Distance	n/a
Environment	IP65
Approvals	CE and Rohs Compliant

Self-testing, maintained (double sided)

Please check data sheets for ordering details



Spot Light- LED Emergency Light

Order code EDI5-GR-95

Lumen Output	65
Battery	3.6V /1.5Ah
Operating Temp	0 to 40 °C
Rated Life	50,000
Duration	3 Hours
Mounting	Ceiling
Dimensions	120mm dia x 60mm

Input Power	110-240 Volts
Weight	1350gr
Housing	ABS,Polycarbonate.
Consumption	11VA
Viewing Distance	30 Metres
Environment	IP40
Approvals	CE and Rohs Compliant

Waterproof, Self Testing, Non Maintained Luminaires Please check data sheets for ordering details



Weather Spot Light LED Emergency Light

Order code EDI5-GR-80/W

Lumen Output	30
Battery	3.6V/120mAh
Operating Temp	0 to 40 °C
Rated Life	50,000
Duration	3 Hours
Mounting	Wall-Ceiling
Dimensions	82mm x 82mm x 29mm

Input Power	12 Volts
Weight	150gr
Housing	ABS,Polycarbonate.
Consumption	2VA
Viewing Distance	n/a
Environment	IP65
Approvals	CE and Rohs Compliant

Maintained (double sided)

Please check data sheets for ordering details



LUX-LR Self testing LED Emergency Light

Order code ED38-LUX-LR

Lumen Output	150
Battery	2.2 Ah HT
Operating Temp	0 to 40 °C
Rated Life	50,000
Duration	3 Hours
Mounting	Ceiling Recessed
Dimensions	50mm dia x45mm

Input Power	220-240 Volts
Weight	1350gr
Housing	Machined Aluminium
Consumption	11VA
Power LED Current	550mA
Environment	IP30
Approvals	CE and Rohs Compliant

3 watt NM self-contained fixture with white LED



Central Battery System

Order code ED15-GR-8100-8129

CIRCUITS	8 to 64
POWER SUPPLY	2.5 to 20 A

Input Power	220-240 Volts
Operating Temp	0 to 40 °C

A CENTRALLY SUPPLIED AND ADDRESSABLE SECURITY LIGHTING SYSTEM

Please Download our Emergency Catalogue for ordering details on all Emergency Products

Safety Products



Protector-T2-20 Solar Road Stud

View distance	Over 800m
Resist compression	30 Tons
Luminous mode	Flashing Type/Constant Type
Rated Life Battery	5-8 years
Rated Life Capacitor	274 years
Mounting	Recessed
Dimensions	148*140*55

X = LED Colour Y = Battery or Capacitor

Order code ED87-PRO-T2-20-X-Y-Z

Input Power	Solar
Beam Spread	120 Degs
Housing	Aluminium
LEDs	8mm
LED Colours	C/W W/W Red Green Blue Amber
Environment	IP67
Approvals	CE and Rohs Compliant



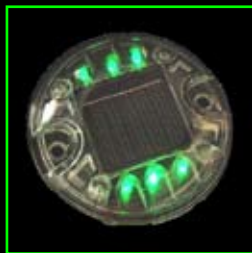
Protector-T2-19 Solar Road Stud

View distance	Over 800m
Resist compression	30 Tons
Luminous mode	Flashing Type/Constant Type
Rated Life Battery	5-8 years
Rated Life Capacitor	274 years
Mounting	Recessed
Dimensions	107*103*52

X = LED Colour Y = Battery or Capacitor

Order code ED87-PRO-T2-19-X-Y-Z

Input Power	Solar
Beam Spread	120 Degs
Housing	Aluminium
LEDs	8mm
LED Colours	C/W W/W Red Green Blue Amber
Environment	IP67
Approvals	CE and Rohs Compliant



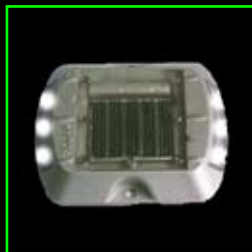
Protector-T1-01-Solar Road Stud

View distance	Over 800m
Resist compression	30 Tons
Luminous mode	Flashing Type/Constant Type
Rated Life Battery	5-8 years
Rated Life Capacitor	274 years
Mounting	Recessed
Dimensions	115 x 23mm

X = LED Colour Y = Battery or Capacitor

Order code ED87-PRO-T1-01-X-Y-Z

Input Power	Solar
Beam Spread	120 Degs
Housing	Aluminium & Optical Panel
LEDs	8mm
LED Colours	C/W W/W Red Green Blue Amber
Environment	IP67
Approvals	CE and Rohs Compliant



Protector-T1-02 Solar Road Stud

View distance	Over 800m
Resist compression	30 Tons
Luminous mode	Flashing Type/Constant Type
Rated Life Battery	5-8 years
Rated Life Capacitor	274 years
Mounting	Recessed
Dimensions	108 x 101 x 22.5mm

X = LED Colour Y = Battery or Capacitor

Order code ED87-PRO-T1-02-X-Y-Z

Input Power	Solar
Beam Spread	120 Degs
Housing	Aluminium
LEDs	8mm
LED Colours	C/W W/W Red Green Blue Amber
Environment	IP67
Approvals	CE and Rohs Compliant

Other types available please call for details



CARLING LED Fitting C/W Emergency

Lumen Output	2040
Efficacy	90lm/W C/W
Colour Temperature	RGB 2200K-4500K
Rated Life	50,000 Hours
Emergency	3Hrs
Mounting	Surface
Dimensions	200mm Dia x 50mm

X=LED Colour Y= Length 600mm 1200 mm 1500mm Z = S=Standard EM=Emergency

Order code ED84-CARLING-X-Y-Z

Input Power	220-240 Volts
Beam Spread	120 Degs
Housing	Aluminium/Polycarbonate
LEDs	Cree
LED Colours	RGB
Environment	IP65
Approvals	CE and Rohs Compliant



CRAMER LED Fitting C/W Emergency

Lumen Output	N/A VARIOUS
Efficacy	85lm/W C/W
Colour Temperature	C/W 600K-7000K
Rated Life	50,000 Hours
Emergency	3Hrs
Mounting	Surface
Dimensions	Various see data sheets

X=LED Colour Y= Length 600mm 1200 mm 1500mm Z = S=Standard EM=Emergency

Order code ED57-CRAMER-X-Y-Z

Input Power	220-240 Volts
Beam Spread	120 Degs
Housing	Aluminium/Polycarbonate
LEDs	Cree
LED Colours	S/C OR RGB
Environment	IP65
Approvals	CE and Rohs Compliant



FALCON-A Bollard LED 12Watt

Lumen Output	1100
Efficacy	90lm/W C/W
Colour Temperature	C/W 600K-7000K
Rated Life	50,000 Hours
CRI	3Hrs
Mounting	Surface
Dimensions	150mm x 500mm-800mm

X=LED Colour Y= Size

Order code ED92-FALCON-A-X-Y-

Input Power	220-240 Volts
Beam Spread	80 Degs
Housing	Aluminium or Stainless Steel
LEDs	Cree
LED Colours	C/W N/W W/W
Environment	IP65
Approvals	CE and Rohs Compliant



FALCON-B Bollard LED 12Watt

Lumen Output	1000-1800
Efficacy	90lm/W C/W
Colour Temperature	C/W 600K-7000K
Rated Life	50,000 Hours
CRI	85
Mounting	Surface
Dimensions	150mm x 500mm-800mm

X=LED Colour Y= Size

Order code ED92-FALCON-B-X-Y

Input Power	220-240 Volts
Beam Spread	80 Degs
Housing	Aluminium or Stainless Steel
LEDs	Cree
LED Colours	C/W N/W W/W
Environment	IP65
Approvals	CE and Rohs Compliant

Other types available please call for details

Accessories



DMX-I-DRIVE 36 LED Driver

Type	DMX 512A
Input Connection	5 Pin XLR
Input Voltage	100-240VAC
Efficiency	88%
Channels	3
Min Operating Temp	-20
Dimensions	210mm x 95mm x 60mm

Order code ED55-DMX350mA-36

Output Current	350mA
Output Connection Type	RJ45
Output Voltage	14-48V DC
Power Factor	0.95
LEDs	4-12 LEDs per Channel
Maximum Ambient Temp	+50
Approvals	CE and Rohs Compliant

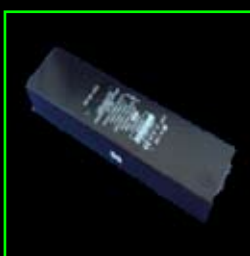


RGB REMOTE CONTROLLER

Type	RGB Controller
Input Connection	Common Anode
Input Voltage	100-240VAC
Efficiency	88%
Channels	3
Min Operating Temp	-20
Dimensions	104mm x 65mm x 24mm

Order code ED40-DMXRC12V

Output Current	350mA
Output Connection Type	Wireless
Output Voltage	12V DC
Power Factor	0.95
LEDs	LED Strip
Maximum Ambient Temp	+50
Approvals	CE and Rohs Compliant

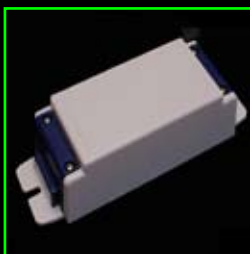


60-&-100watt 12 volt LED Driver

Type	60 watt transformer
Input Connection	Bi Wire
Input Voltage	100-240VAC
Efficiency	81%
Environment	IP67
Min Operating Temp	-20
Dimensions	230mm x 42mm x 65mm

Order code ED55-D6CV12-IP67-&-D100CV12-IP67

Output Current	350mA
Output Connection Type	Bi Wire
Output Voltage	12V DC
Power Factor	0.95
LEDs	30-60
Maximum Ambient Temp	+50
Approvals	CE and Rohs Compliant



MultiDIM Leading & Trailing Edge Compatible

Type	MultiDim Driver
Input Connection	Bi Wire
Input Voltage	220-240VAC
Efficiency	81%
Channels	n/a
Min Operating Temp	-20
Dimensions	230mm x 42mm x 65mm

Order code ED55-D11 - D20 - D38

Output Current	350mA 500mA 700mA
Output Connection Type	Bi Wire
Output Voltage	14-48V DC
Power Factor	0.95
LEDs	3-17 LEDs
Maximum Ambient Temp	+50
Approvals	CE and Rohs Compliant

Type D11 = 3-5 LEDs D20 = 5-9 LEDs D38 = 10-17 LEDs



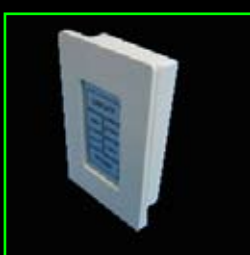
RC Power Led Converter LED Driver

Type	LED Driver
Input Connection	Bi Wire
Input Voltage	100-240VAC
Efficiency	88%
Channels	n/a
Min Operating Temp	-20
Dimensions	80mm dia x 30mm

Order code ED100-RC 312 315 309

Output Current	350mA 500mA 700mA
Output Connection Type	Bi Wire
Output Voltage	36-48V DC
Power Factor	0.95
LEDs	6-12 LEDs
Maximum Ambient Temp	+50
Approvals	CE and Rohs Compliant

Type 312 = 12 LEDs 350mA 315 = 10 LEDs 500mA 309 = 9 LEDs 700mA



WALLPLATE PANEL CONTROLLER

Type	RGB Controller
Input Connection	Common Anode
Input Voltage	Battery
Efficiency	88%
Channels	3
Min Operating Temp	-20
Dimensions	L120xW75xH31 mm

Order code ED77-DMXRC12V

Output Current	350mA
Output Connection Type	Wireless
Output Voltage	12V DC
Power Factor	0.95
LEDs	LED Strip etc
Maximum Ambient Temp	+50
Approvals	CE and Rohs Compliant



RGBox 50 RGB LED Driver

Type	RGB convertor
Input Connection	4 wire connection
Input Voltage	100-265VAC
Efficiency	88%
Channels	3
Min Operating Temp	-20
Dimensions	147mm x 75mm x 39mm

Order code ED100-RGBOX-50

Output Current	3 x 700mA
Output Connection Type	4 wire connection
Output Voltage	12-24V DC
Power Factor	0.95
LEDs	DMX
Maximum Ambient Temp	+50
Approvals	CE and Rohs Compliant



Audio DMX Controller

Type	Audio
Input Connection	Common Anode
Input Voltage	12-24dc
Efficiency	88%
Channels	3
Min Operating Temp	-20
Dimensions	L121xW53xH25 mm

Order code ED77-CON-Audio-RF8B

Output Current	350mA
Output Connection Type	Bi Wire
Output Voltage	14-48V DC
Power Factor	0.95
LEDs	180 watt
Maximum Ambient Temp	+50
Approvals	CE and Rohs Compliant





These days we all have a responsibility for our environment. We must learn to live in a sustainable way and to use our energy resources in the most efficient way possible.

At EDEN illumination Ltd, we are committed to offering products which will provide an energy efficient LED alternative to conventional lighting technologies.

We can now offer advice on the amount of energy saving which may be achieved on particular lighting projects over a given period of time, using LED products.

Energy-Efficiency Loans from the Carbon Trust are a cost effective way to replace or upgrade your existing equipment with a more energy efficient version. You could borrow from £3,000 to £400,000 interest free, unsecured for up to four years, without arrangement fees.

This means an immediate benefit from energy saving and reduced utility bills. EDEN illumination Ltd, can provide details of Carbon Trust interest free loans and assist you in completing your application.

EDEN illumination

Commercial LED Catalogue 2011



Downlights



Floodlights



Landscape



Pool & Fountain



Linear



Wallwash



Uplighting



Emergency



Accessories

Also available LED Accessories - Drivers - DMX - Dimming
Bespoke fittings manufactured to your Specification - Drawing
Accessories manufactured to your Specification - Drawing

www.edenillumination.com

We reserve the right to make changes at any time in order to maintain the highest product quality.