



EDGE ILLUMINATION SIGNS WITH LEDS

Eco Light



> The edge illumination signs use a technology that is friendly towards the environment. Due to their low power consumption and competitive price, this product can be characterized as ecological and economical. Each model combines modern esthetics with technological functionality. They are used in every area where public orientation and esthetics must be combined. The marking is placed on a clear sheet of acrylic material



- > Special high luminosity LEDs
- > Great LED life span (100.000 hours).
- > Elegant appearance Polycarbonate
- > Slim profile ĩ
- > Friendly towards the environment
- > Indication arrows can be user placed
- > Ideal for hung installation

- > Suspended ceiling installation using a special base
- > Construction material : ABS, PVC,
- > Operation temperature : 0 to 40 C
- > Relative humidity : up-to 95%
- > Produced in accordance with: EN 60598 1, EN60598-2-22, EN 1836



EDGE ILLUMINATION SIGNS WITH LEDs

MAINTAINED, EDGE ILLUMINATION SIGNS with green background and white LEDs

TYPE	OPERATION VOLTAGE	CONSUMPTION	BATTERY NI-CID	DURATION	POWER OF Light Source	WEIGHT
ED15-MLD-28D/w	220-240V AC/ 50-60Hz	7.5VA	3.6V /1Ah	3 hours	45/ 45 lm	520 gr.
ED15-MLD-34D/w	220-240V AC/ 50-60Hz	8VA	3.6V /1Ah	3 hours	45/ 55 lm	860 gr.
ED15-MLD-44D/w	220-240V AC/ 50-60Hz	8VA	3.6V /1Ah	3 hours	45/ 55 lm	1250 gr.

MAINTAINED, EDGE ILLUMINATION SIGNS with transparent background and green LEDs

ED15-MLD-28S/g	220-240V AC/ 50-60Hz	7.5VA	3.6V /1Ah	3 hours	18/ 18 lm	500 gr.
ED15-MLD-28-S/G/90	220-240V AC/ 50-60Hz	7.5VA	3.6V /1Ah	90 Min	18/ 18 lm	500 gr.
ED15-MLD-34S/g	220-240V AC/ 50-60Hz	8VA	3.6V /1Ah	3 hours	18/ 22 lm	800 gr.
ED15-MLD-44S/g	220-240V AC/ 50-60Hz	8VA	3.6V /1Ah	3 hours	18/ 22 lm	1200 gr.

EDGE ILLUMINATION SIGNS FOR CBS 230V AC

ED15-DLD-28/CBS/g	110V-240V AC/DC	4VA	-----	-----	18 lm	400 gr.
ED15-DLD-34/CBS/g	110V-240V AC/DC	4VA	-----	-----	22 lm	400 gr.
ED15-DLD-28/CBS/w	110V-240V AC/DC	4VA	-----	-----	45 lm	400 gr.
ED15-DLD-34/CBS/w	110V-240V AC/DC	4VA	-----	-----	55 lm	400 gr.

ACCESSORIES

TYPE: SET FOR CEILING INSTALLATION :

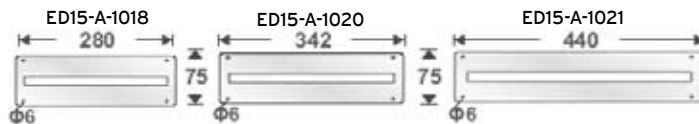
- ED15-A-1022 suitable for 20 cm distance
- ED15-A-1025 suitable for 40 cm distance
- ED15-A-1026 suitable for 60 cm distance
- ED15-A-1027 ceiling instal. with chain up to 50 cm

TYPE: RECESS MOUNTING BASE

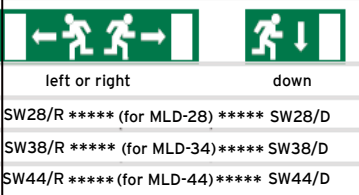
- ED15-A-1018 suitable for MLD-28, DLD 28
- ED15-A-1020 suitable for MLD-34, DLD 34
- ED15-A-1021 suitable for MLD-44, DLD 44



Recess mounting base for suspended ceilings.



MARKING OVERLAY

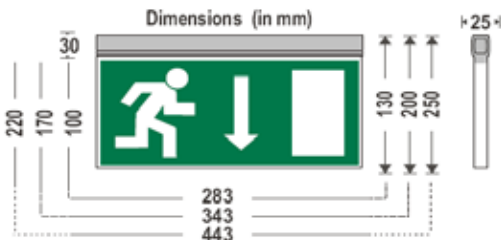


Marking overlay contained in the package. Please define during the order the type of sign.

The desired overlay is placed on the lighted panel using special mounting accessories (screws) which are also included



Easy change Of the marking overlay



Dimensions (in mm)
 MLD-28, DLD-28 : 283 x 180 x 34
 MLD-34, DLD-34 : 342 x 220 x 34
 MLD-44, DLD-44 : 443 x 300 x 34

*** ACCESSORIES INCLUDED IN THE PACKAGE. SUITABLE FOR WALL AND CEILING MOUNTING.**



LEDs of high luminosity



3 hours



Ni-Cd 3.6V/1Ah



16 m. ED-28
30 m. ED-34
34 m. ED-44



3 years guarantee (1 year for battery)



We reserve the right to make changes at any time in order to maintain the highest product quality.