
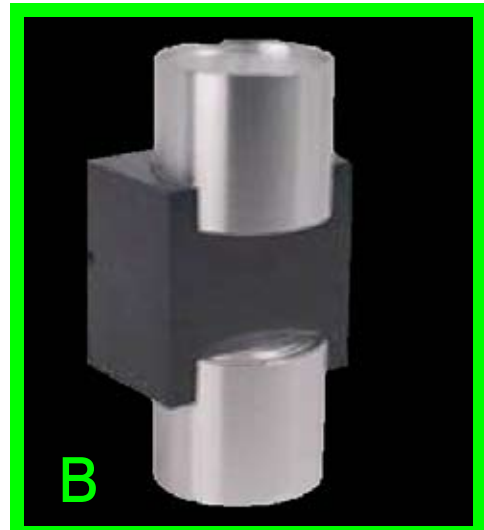


# ECHO RANGE

 Led Lighting Solutions Provider

 **EDEN**  
illumination



ECHO

## Applications:

- Hotels
- Offices
- Reception
- Bedroom
- Hallways
- Living Rooms

Energy efficient lighting with a stylish design

LEDs can withstand shock, vibration, frequent switching and extremes without compromising its long life

The LEDs on these Lights never have to be replaced saving you time, money and storage space for replacement bulbs

LEDs use a fraction of the power (80-90%) required by conventional filament bulbs.

## Enlightened Benefit:

This product is made of pure recycleable aluminium Each time you buy our product, youre closing the recycling loop by buying recycled, minimizing waste. Unlike incandescent bulbs, LED bulbs produce minimal amounts of heat, so more electricity goes directly to generating light. Because they lack a filament that wont burn out, LED bulbs last much longer than incandescent bulbs.

## Features

|                             |                         |
|-----------------------------|-------------------------|
| Lumen Output                | SEE BELOW               |
| Wattage                     | 3.2 Watts               |
| Input Power                 | 100 to 240 Volts        |
| Efficacy                    | 85 lm/W                 |
| Color Temperature (CCT)     | 3500K to 6500K          |
| Color Rendering Index (CRI) | 75                      |
| Beam Spread                 | 45 Degs                 |
| Rated Life                  | 50,000 Hrs              |
| LEDs                        | Cree High power         |
| Housing                     | Machined Alluminium     |
| Mounting Options            | Wall                    |
| Dimensions                  | SEE BELOW               |
| Power Supply                | Constant Current Driver |
| Voltage                     | 24 Volts                |
| Warranty                    | 2 Years                 |
| Environment                 | IP54                    |

The Fountain Business Park Ellis Street Coatbridge ML5 3AA  
Phone: 07540 479985 Email: sales@edenillumination.com

The Studio 55 Castle Terrace Leven Fife KY8 5EU  
Phone: 07905 565604 Email: sales@edenillumination.com

Web: [www.edenillumination.com](http://www.edenillumination.com)

 **EDEN**  
illumination

# ECHO



Input Voltage:12/24/110/220V

LED power:1W\*3Pcs

Beam Angle:15°, 30°

Luminous flux:240~270lm(6500K)

Color: R,G,B,Y,CW,WW,RGB

Body Size: 310\*57\*30mm

Input Voltage:12/24/110/220V

LED power:1W\*2Pcs

Beam Angle:15°, 30°

Luminous flux:160~180lm(6500K)

Color: R,G,B,Y,CW,WW,RGB

Body Size: 113\*45mm

Input Voltage:12/24/110/220V

LED power:1W\*2Pcs

Beam Angle:15°, 30°

Luminous flux:160~180lm(6500K)

Color: R,G,B,Y,CW,WW,RGB

Body Size:113\*47mm

## Order Details

| Description Code | Luminaire Type |   |   |   | Viewing Angle |    |    | LED Colour Option |       |      |       |       |            |
|------------------|----------------|---|---|---|---------------|----|----|-------------------|-------|------|-------|-------|------------|
|                  | A              | B | C | D | 30            | 45 | 60 | Red               | Green | Blue | Amber | White | Warm White |
| ECHO Range       | A              | B | C | D | 30            | 45 | 60 | Red               | Green | Blue | Amber | White | Warm White |
| ED75-ECHO        | A              | B | C | D | 30            | 45 | 60 | R                 | G     | B    | A     | C/W   | W/W        |
| *                | *              |   |   |   | *             |    |    | *                 |       |      |       |       |            |

## Available Light Output Colours



We reserve the right to make changes at any time in order to maintain the highest product quality.

The Fountain Business Park Ellis Street Coatbridge ML5 3AA  
Phone: 07540 479985 Email: sales@edenillumination.com

The Studio 55 Castle Terrace Leven Fife KY8 5EU  
Phone: 07905 565604 Email: sales@edenillumination.com

Web: [www.edenillumination.com](http://www.edenillumination.com)

ECHO-R REV-A SEP-2009